

THE ANSWER TO PARTQ... THE TIMBER WINDOW & DOOR INDUSTRY HAS BEEN LOOKING FOR!



SASH WINDOWS

THE
PARTQ
BLUEPRINT

IN COLLABORATION WITH



ERA

accoya 

 **MIDLAND**
JOINERY SERVICES LTD.

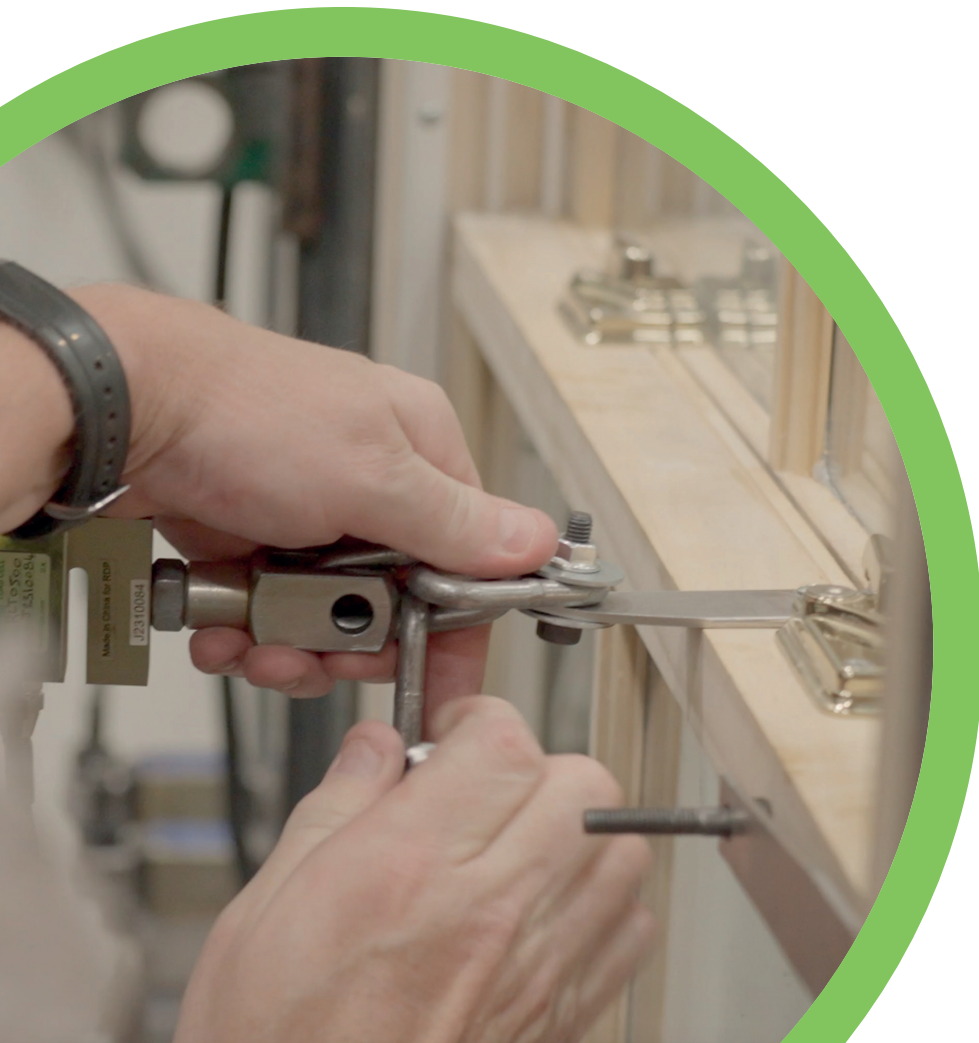
INTRO

The elephant in the room for Joineries is PartQ, and it's time that something was done about it, for the sake of the industry.

For years PartQ has been a headache for Joiners making windows and doors for new builds and extensions, as there's been a lot of misinformation and misunderstanding out there. With the impending implications of PartQ being brought in for the refurbishment market, it's something we believe Joiners desperately need help with. Not a scheme or membership that is there to make a profit.

SD Hardware has played a crucial role in bringing together Accoya wood, ERA, and Midland Joinery Services to ensure compliance with Part Q of the Building Regulations. This is something we're giving away to joinery industry for **FREE**.

This document provides all the necessary details to ensure compliance with Part Q. Including details from our PAS24 tests, which will serve as the blueprint for achieving compliance.



CONTENTS

Frequently asked questions	4
The Process	5
Component List for Sash Windows	6
Section Drawings for Sash Windows	7



FREQUENTLY ASKED QUESTIONS

Below are some of the frequently asked questions we've come across when talking to joiners about Part Q. As well as some questions about our 'PartQ Blueprint'.



Q I'm buying PAS24 products, does that mean I'm complying with PartQ?

A No. Just because you're buying PAS24 products does NOT mean you are complying with PartQ. To comply with PartQ you need to either test your own windows or use evidence that your windows and doors are manufactured following a PartQ tested scheme.

Q What is the cost to follow this Blueprint?

A Zero. There is no cost to follow our blueprint. We are giving this away to the industry for FREE. We'll supply you with all you need to self certify that your windows and doors are compliant by following the details in this document.

Q What's the catch?

A There isn't one! SDH, Accoya and ERA, truly believe our industry needs help in overcoming this cumbersome regulation. Making it easier and less costly for Joiners to produce compliant windows and doors, ensuring our industry thrives.

Q What if my windows or doors are a different configuration or larger in size than the windows or doors tested ?

A In the above instance, we would term this as 'outside scope'. When a window or door is 'outside scope' please get in touch with the developer or the building control office and receive written consent that they agree the windows or doors are fit for purpose. A footnote to this; is that not every size and configuration can be tested as it is financially unobtainable. Most companies that have a PAS 24 window and door, follow the sizes and configurations of the test that we have conducted. When the product sits 'outside scope' we advise the following statement to be put forward...

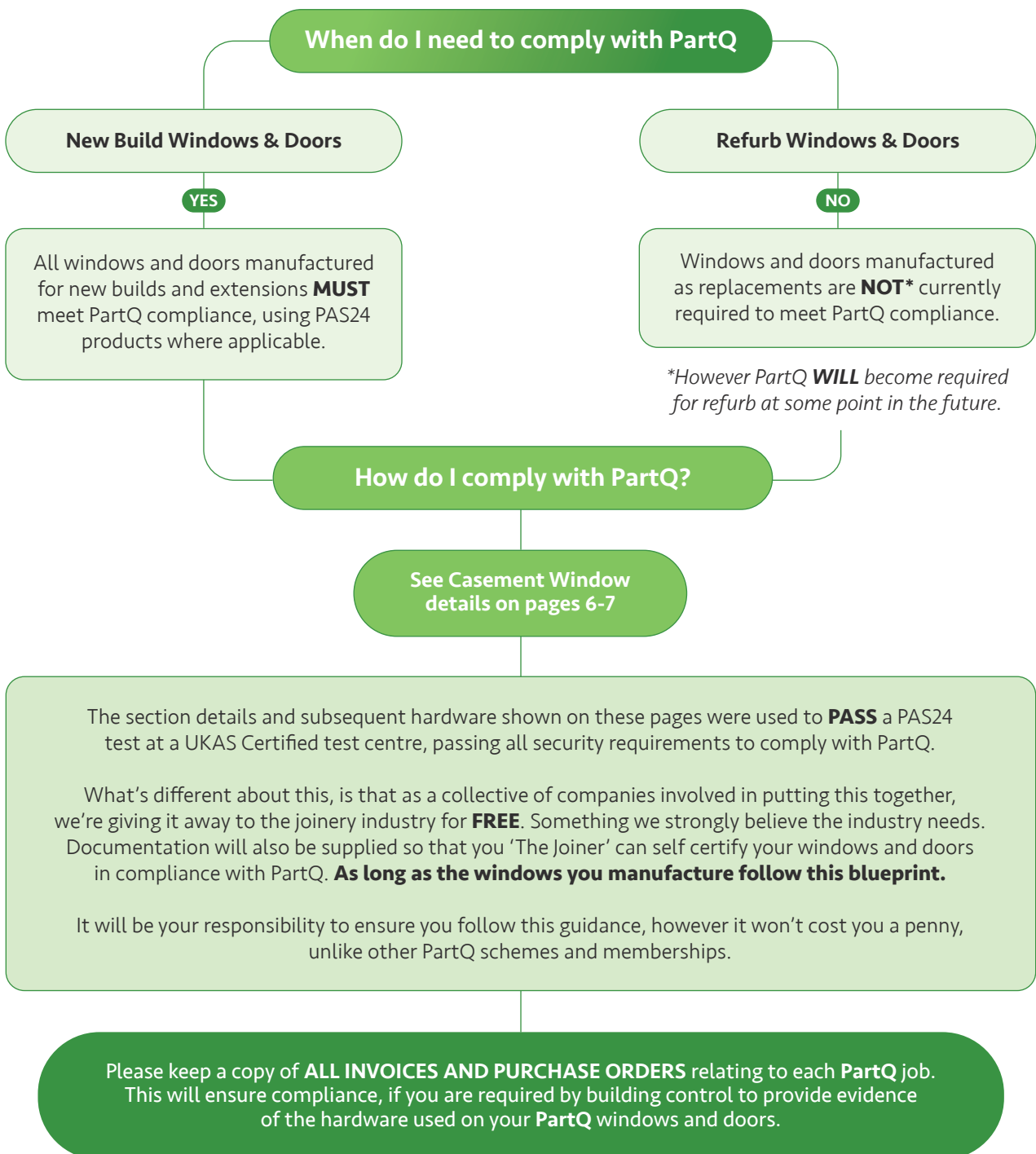
"Although this window or door is outside the scope of the windows and doors tested, we can safely assume the manner of construction and hardware used deems this window or door to be secure." This terminology and statement is what is usually raised if and when the question arises.

Q What if I'm asked to design a window or door differently?

A If you are asked by your client, the developer and/or building control to design a window or door differently, (one example could be for heritage reasons) this would be considered outside scope. In this instance, we would recommend that you advise your client and building control that you can still ensure the window or door will be made secure by using the same hardware stated in the test data supplied. However, if the design or section details are changed this would require the signing of documentation by the client, developer and/or building control stating they agree each window or door sits outside scope for aesthetic or heritage reasons. Putting the onus on them rather than you the Joiner. **(Please see 'Outside Scope Statement' document).**

How do I comply with PartQ?

Follow the process below to discover as and when you need to comply with **PartQ**... Including the steps you're required to take ensuring compliance when required.



SASH WINDOW: Component List

PULLEYS & CORD

Part No.	Description
SP-PB-RE	1 3/4 Inch Radius End Sash Pulley x2
SCN-8-100	Plaited Nylon Sash Cord (8mm)

FURNITURE

TS-SL	Timber Series Sash Lift (40mm) x2
TS-CLC	Timber Series High Security Classic Cam Lock
TS-HSCK11	Timber Series High Security Cam Keep (30mm Plate)

SECURITY

SWSL-B	Sash Window Screw Locks
--------	-------------------------

BEADING

ACC-PB8X25	8x25mm Parting Bead
ACC-SB20X15	20x15mm Staff Bead
ACC-GB18X15	Glazing Bead (with 16 gauge stainless steel pins)

WEATHER SEALS

AQ21	Schlegel Aquamac 21
------	---------------------

PILE CARRIER

PS4	Self Adhesive Carrier with 6.5mm Pile
-----	---------------------------------------

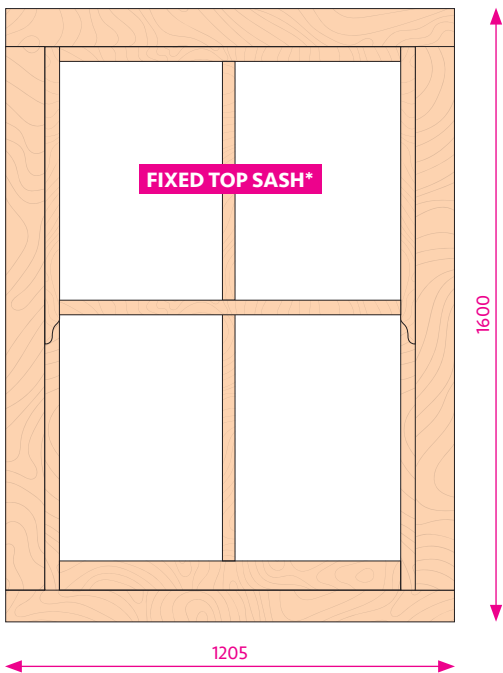
GLASS & GLAZING TAPE

-	4-8-4 Toughened Panes
SGT2X12	2 x 12mm Security Glazing Tape

ACCOYA® TIMBER BOX SECTION

-	Outer 100 x 8mm
-	Inner 85 x 18mm
-	Middle 116 x 18mm
-	Cill 144 x 70mm
-	Top rail 55 x 44mm
-	Meeting rails 54 x 44mm
-	Bottom rail 85 x 44mm
-	Bars 34 x 44mm

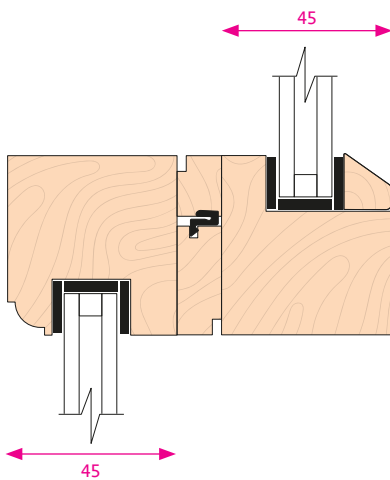
SASH WINDOW: Section Drawings



*Top Sash fixed with 3" Stainless Steel Screws

MEETING RAIL DETAIL

AS SHOWN IN THE SECTION DRAWING BELOW

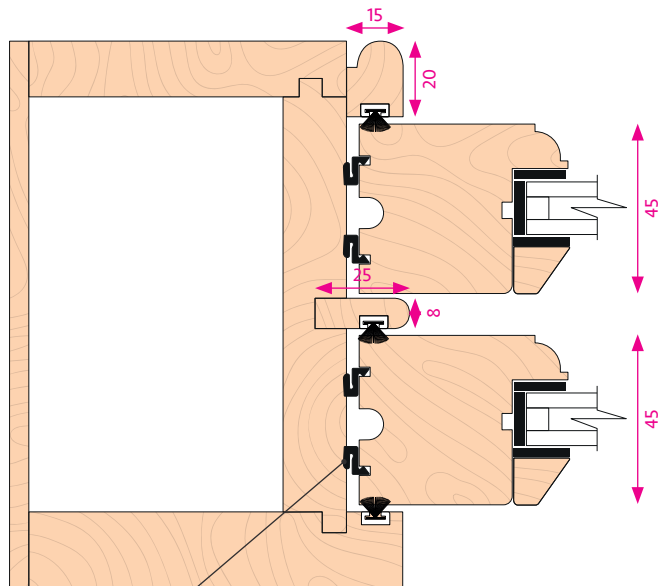


Method of Jointing: Tenons

The drawings on this page show the section details of the windows that were security tested to PAS 24, adhering to Part Q guidelines. To ensure compliance you MUST use the sections and associated hardware.

STAFF & PARTING BEAD DETAIL

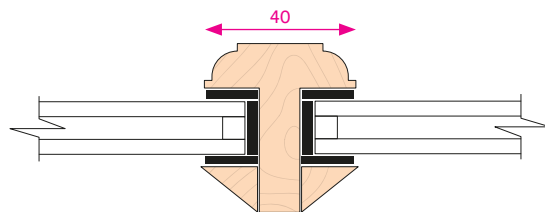
AS SHOWN IN THE SECTION DRAWING BELOW



Schlegel Aquamac 21

GLAZING BEAD DETAIL

AS SHOWN IN THE SECTION DRAWING BELOW



Test Details

Certificate No: 2455

Issue Date: 10/12/24

Test Centre No: 4052

FOR HARDWARE



SD Hardware Ltd
Unit 7 Forge Lane,
Enterprise Park, Saltash,
Cornwall PL12 6LX

01752 651330
sales@sdhardware.co.uk
www.sdhardware.co.uk

FOR TIMBER



Accsys
4th Floor ,
3 Moorgate Place,
London
EC2R 6EA

www.accoya.com/uk/