

F6 Extra S



PRODUCT

The F6 Extra S cylinder with freely duplicating keys is an vertical key system with high attack resistance. The F6 Extra S is available in keyed different and keyed alike versions.

APPLICATION

F6 Extra S is a cylinder with certified superior levels of security featuring a pre-cut solution for greater pull resistance, excellent for the access control of residential buildings and medium sized commercial installations.

F6 Extra S corresponds to some of the highest security standards, certified by international organisations: SKG certification is a guarantee of superior attack resistance and protection, while the BSI Kitemark is one of the world's most respected and reliable forms of certification, and a symbol of quality and security.

VERSION

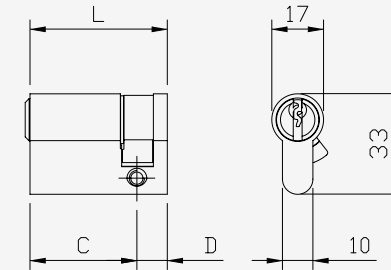
Available in compact design as:

- single profile cylinder
- double profile cylinder
- pre-arranged for knob
- knob cylinder

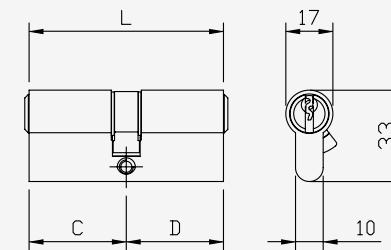
TECHNICAL PRODUCT FEATURES

- Cylinder body and plug made of brass in the standard version matt nickel-plated
- Suitable for installation in fire doors
- Encryption pins in stainless steel
- Counterpins in brass
- Springs in stainless steel
- Euro-profile cylinder (norm)
- Locking cam made of sintered steel
- Locking cam in min. 30° position (according to DIN)
- In each plug are 2 picking-resistant counterpins
- In each plug are present 2 pins, increasing the bumping resistance
- The drilling protection consists of a hardened steel pin in the cylinder body and plug
- Steel bar as casing pull-out protection
- Sacrificial cut

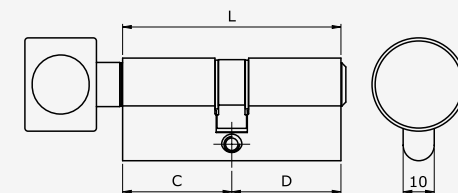
SINGLE PROFILE CYLINDER



EUROPEAN DOUBLE PROFILE CYLINDER



EUROPEAN DOUBLE PROFILE CYLINDER. ROUND KNOB



F6 Extra S

FEATURES

F6 EXTRA S has 6 encryption pins from a length of 30-30 made of wear-resistant special brass, per locking side.

The cylinder is equipped with drill-resistant devices collocated in the cylinder body and plug , anti-pick and anti-bump protection protection, just as protection against pulling.

The surface of the cylinder body is matt nickel-plated or brass as standard.

Three overlapping profile ribs of the plug increase the the security of the profile cylinder against unauthorised openings (paracentric key profile). The keys are made of nickel coated brass.

Optionally selectable features:

- Emergency and danger function

Further systems of the F6 series:

- F6 (basic version)
- F6 Extra (with additional drilling protection)
- F6 Extra S3 (with BSI*** certification)

More details can be found on the respective data sheets

STANDARDS

Compact version:
DIN EN 1303: 2015-08
(1I6I0IBI0IC16ID)

SKG***
BSI*
EN1627 RC3
IMP C