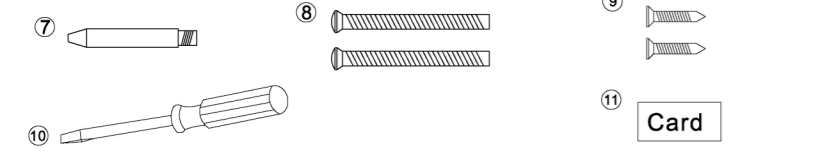
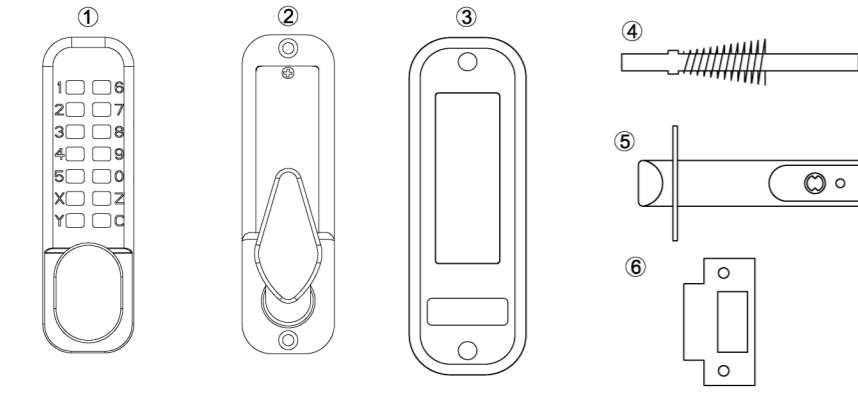
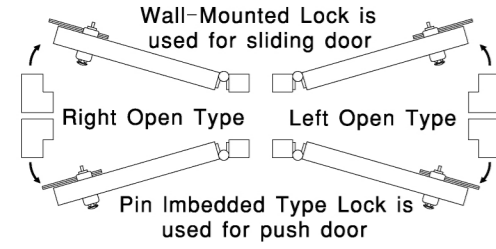


## MODEL ED20 - CONTENTS



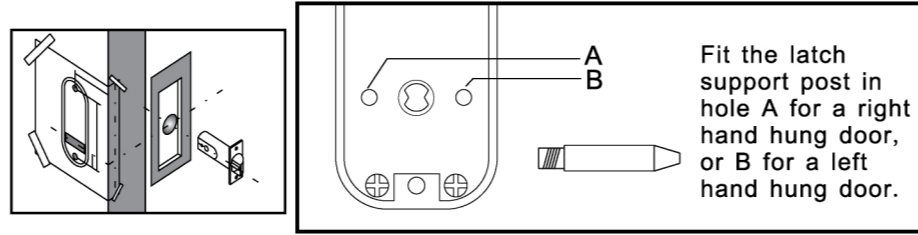
- 1-Lock Password Box
- 2-Interior Panel
- 3-Rubber Cushion
- 4-Lock Shaft (With spring)
- 5-Latch (60mm backset)
- 6-Strike plate
- 7-Latch support post
- 8-Fixing Bolts (Length is adjustable)
- 9-Fixing Wooden Bolt (for fixing lock beam)
- 10-Screw driver
- 11-Password Card

## HANDING GUIDE



Door is open from right hand side, viewing from the inside part of door, the hinge is at the right side.

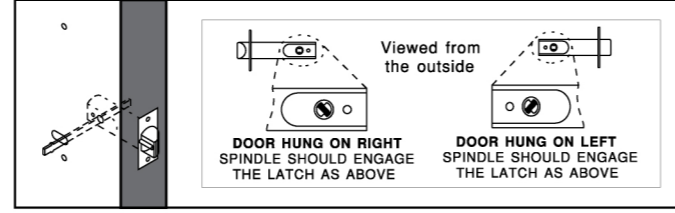
## CHANGING THE HANDING OF THE UNIT



- Tape the template to the door. Make sure that you fold it along the appropriate line, depending on the backset of the latch (60mm Or 70mm).
- Mark and drill all six 10mm holes.
- Use a chisel to clear the line of 4×10mm holes into a single slot.

## POSITIONING AND FIXING THE LATCH

- Mark a central point on the 'centre line of latch' on the door edge.
- Drill a 25mm hole × 85mm deep.
- Insert the latch into the hole, and draw around the face plate.
- Remove the latch and cut a 3mm rebate so that the face plate will fit flush with the door.
- Secure the latch with the wood screws.
- When fitting a backplate to a left-hand door the BLUE screw must go in the right-hand hole and vice versa.



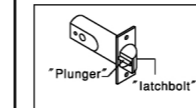
- Select the spindle to suit the thickness of the door.
- Insert the spindle through the slot in the door and make sure that it engages the latch correctly for the hand of the door - (see inset diagram.)

## INSTALLATION

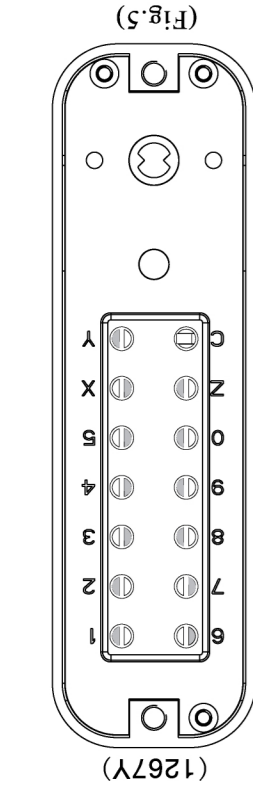
Cut the lock and adjust the length of the lock shaft for assuring to completely turn the screw into the password box if necessary according to the thickness of door.  
The suitable thickness of door ranges 35mm-55mm according to the square sheet with spring.



- Cut the fixing bolts to suit the door thickness, allowing at least one threaded section to screw into the lockcase.
- Hold the lock case and the backplate, with the seals, onto the door with the spindle in position.
- Using the fixing bolts screw everything together through the top and bottom holes of the backplate. Before final tightening make sure the lock is vertical, and test the mechanism to ensure that it is all moving easily. **DO NOT CLOSE THE DOOR UNTIL YOU ARE SURE THAT THE CODE WORKS. DO NOT over tighten the fixing bolts as this may cause distortion and lead to poor operation.**
- Position the strike plate on the door so that it lines up with the flat of the latchbolt, **NOT THE PLUNGER.**
- Mark the inner and outer edges of the strike plate and cut a 1mm rebate so that it fits flush with the surface of the door frame.
- Drill or cut a recess for the latchbolt.
- Fit the strike plate using only one wood screw as first to ensure that it is positioned accurately. The latch bolt, and not the plunger, should enter the aperture easily, and be held without too much 'play'. When satisfied secure the strike with the second screw.



**N. B. The plunger beside the latchbolt deadlocks the latchbolt and protects it against manipulation. IT MUST NOT enter the strike plate aperture when the door is closed.**

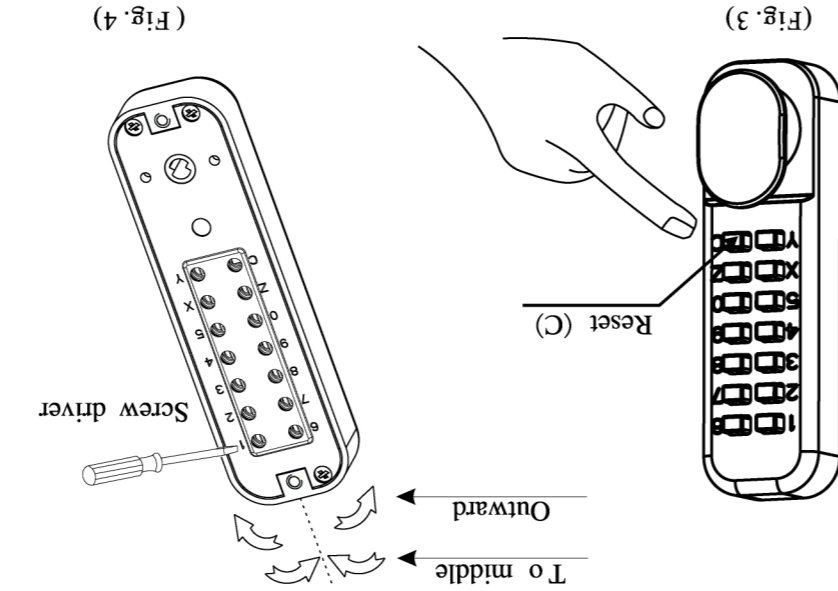


Please read this manual carefully and follow it for operation.

3. Notes
- 3-1: Do not press any key while changing the password.
  - 3-2: The password can be set to 1-7 figures only, and 5-6 figures shall be best.
  - 3-3: Distinguish the password key from the common key by the key indication on the back of the latch as shown in Fig. 4. Turn the former password key by 190° to the middle of the latch is the common key (not password key) as shown in Fig. 5.
  - 3-4: For example as shown in Fig. 5, 1267Y are the password keys and 345X890Z are the common keys (not password keys).
  - 3-5: The ex-factory password is already set. It is strongly suggested to change the password by the user before the installation.

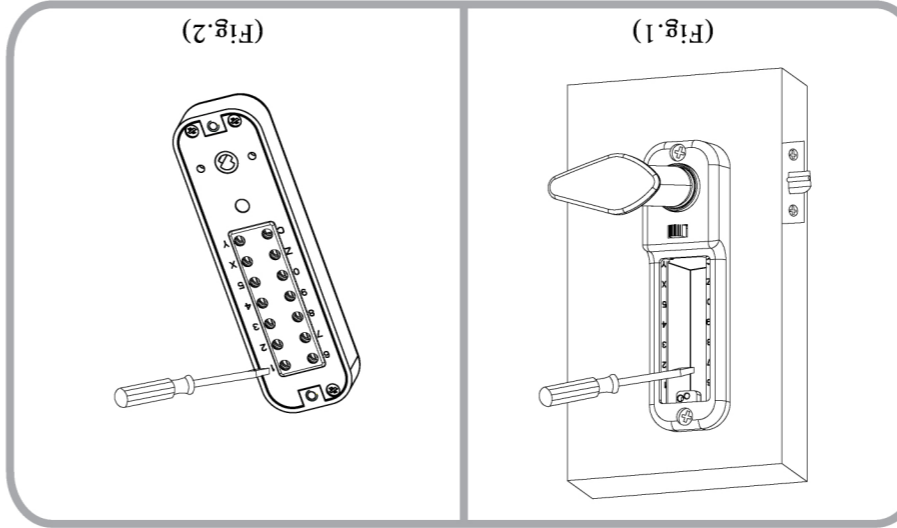
2. Example  
For example, to change the former password (45X90) to the new one (1267Y), press the reset key (C) on the front of the latch as shown in Fig. 3, turn the latch backward, insert the screw driver into the minus slot inside the key slot, turn it to change the password as shown in Fig. 4. Turn (45X90) key by 190° to the middle first to change the password into the common key and set the latch in no-password status, then turn the (1267Y) key to be set as the new password outward by 190° as shown in Fig. 4. As the operation is completed, press the new password and turn the knob to check if the latch works in normal. If so, the password is changed successfully.

## MODIFY PASSWORD



1. Change the password  
It is relatively easy to change the password. Distinguish the password key from the common key first, as shown in Fig. 5, the half-round red key pointing outward is the password key and the key pointing to the middle of the latch is the common key. Then, press the reset key (C) on the front of the latch as shown in Fig. 3, and turn the latch backward as shown in Fig. 4. Steps: change the former password into the common key first (i.e., turn the former password key by 190° (turn to the end) to the middle of the latch as shown in Fig. 4) to set the latch in no-password status. Turn the key to be set as the password outward by 190° as shown in Fig. 4. As the operation is completed, press the new password and turn the knob to check if the latch works in normal. If so, the password is changed successfully.

## MODIFY PASSWORD



How to change the password:  
\* Pattern 1:  
This is a simple way to change the password. Remove the rear cover board of the inner door, insert the minus screw driver attached into the key slot, and turn it to change password (as shown in Fig. 1). For this purpose, make a square hole on the door first, which has the size same with that on the pad attached.  
\* Pattern 2  
Remove the latch first, turn the latch on the outer door backward, insert the minus screw driver attached into the key slot, and turn it to change the password (see Fig. 2).

## INSTALLATION

