

# HUSKYFOLD 30

Folding hardware system for internal, wooden doors weighing up to 30kg. Ideal for DIY projects and professional installations to create folding room partitions and wardrobes in the home.



## Features & Benefits

- Doors can fold to one or both sides of the opening. When open, the doors stack neatly to one side.
- Available in kit pack format to cater for various door configurations. A fittings kit is also available for when additional doors are required.
- Extremely easy to install - designed with no routing and high quality components to allow for easy hanging of doors.
- Hinge handle included in the kit pack for easy closure of the doors.
- Designed with high quality hinges - reducing the clearance between the doors to 2mm.
- Designed without the need for a guide channel, allowing for a clear walk way between rooms.
- Flush bolts are available as an optional extra to securely hold the door in the closed position.

**P C Henderson Ltd**  
Durham Road, Bowburn,  
County Durham,  
DH6 5NG

**UK SALES**  
**T:** +44 (0) 191 377 7345  
**E:** sales@pchenderson.com  
**W:** www.pchenderson.com

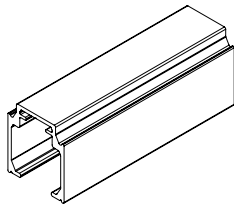
**HENDERSON**

## Product Specification

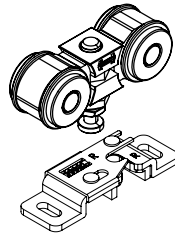
| Product Code | Door Configuration | Track Length | Max. Door Height | Max. Door Width | Door Thickness Range | Max. Door Weight |
|--------------|--------------------|--------------|------------------|-----------------|----------------------|------------------|
| HF30/2/0     | 2+0                | 1800mm       | 2700mm           | 850mm           | 20-44mm              | 30kg             |
| HF30/2/1     | 2+1                | 2700mm       | 2700mm           | 850mm           | 20-44mm              | 30kg             |
| HF30/2/2     | 2+2                | 3500mm       | 2700mm           | 850mm           | 20-44mm              | 30kg             |
| HF30/3/0     | 3+0                | 2700mm       | 2700mm           | 850mm           | 20-44mm              | 30kg             |
| HF30/3/1     | 3+1                | 3500mm       | 2700mm           | 850mm           | 20-44mm              | 30kg             |
| HF30/4/0     | 4+0                | 3500mm       | 2700mm           | 850mm           | 20-44mm              | 30kg             |

## Kit Contents

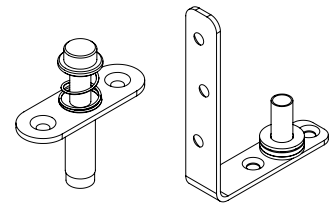
| Component        | Product Code | Quantity (Door Configurations) |     |     |     |     |     |
|------------------|--------------|--------------------------------|-----|-----|-----|-----|-----|
|                  |              | 2+0                            | 2+1 | 2+2 | 3+0 | 3+1 | 4+0 |
| Track            | 280/**HP     | 1                              | 1   | 1   | 1   | 1   | 1   |
| Hanger Assembly  | HF/284       | 1                              | 1   | 2   | 1   | 1   | 2   |
| Pivot Set        | HF/PIVOT     | 1                              | 2   | 2   | 1   | 2   | 1   |
| Hinge Handle Set | HF/282H      | 1                              | 1   | 2   | 1   | 1   | 2   |
| Hinge Set        | HF/282       | 0                              | 0   | 0   | 1   | 1   | 1   |



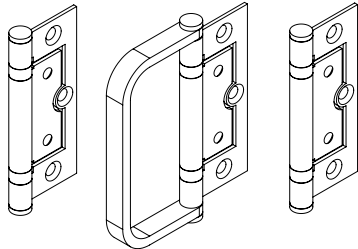
Track  
280/HP



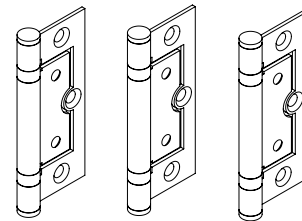
Hanger Assembly  
HF/284



Pivot Set  
HF/PIVOT



Hinge Handle Set  
HF/282H



Hinge Set  
HF/282

## Optional Accessories

| Component    | Description  | Short Code  |
|--------------|--|-------------|
| Fittings Kit | For an additional 2 doors  | HF30/2/0/TL |
|              | For an additional 4 doors  | HF30/4/0/TL |
| Flush Bolt   | Non locking flushbolt - 110mm high. Securely holds the doors into the closed position. | FB110S      |

## Flush Bolt Calculator

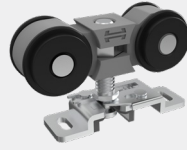
| Door Configuration | No. of Flushbolts Required |
|--------------------|----------------------------|
| 2+0                | 1                          |
| 2+1                | 1                          |
| 2+2                | 2                          |
| 3+0                | 1                          |
| 3+1                | 2                          |
| 4+0                | 2                          |

# HUSKYFOLD 30

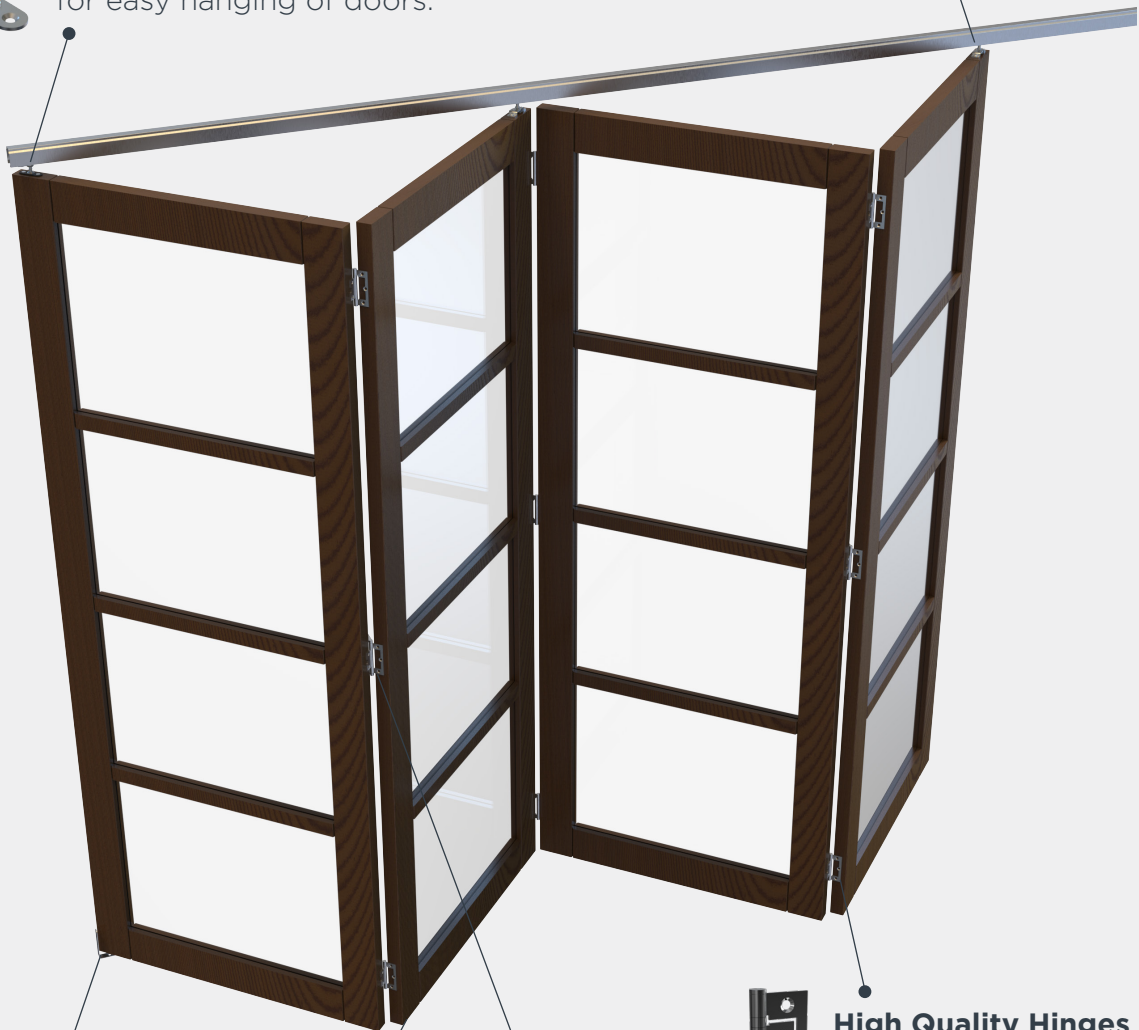
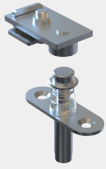
## Product Features

### Fast Fix Hanger Assembly

for rapid installation. Simply slide the protruding legde to one side, allowing for easy hanging of the doors.



**Spring Loaded Top Pivot**  
for easy hanging of doors.



**Concealed Bottom Pivot**  
for improved door rotation.



**High Quality Hinges**  
for minimal clearance  
between the doors.



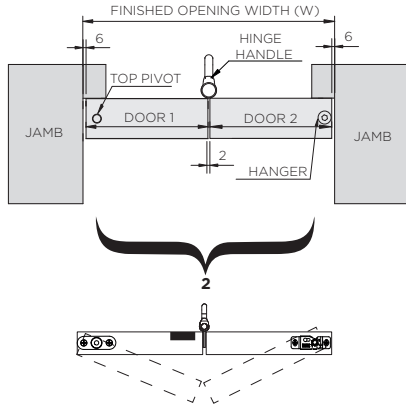
**Hinge Handle**  
for easy closure of doors.



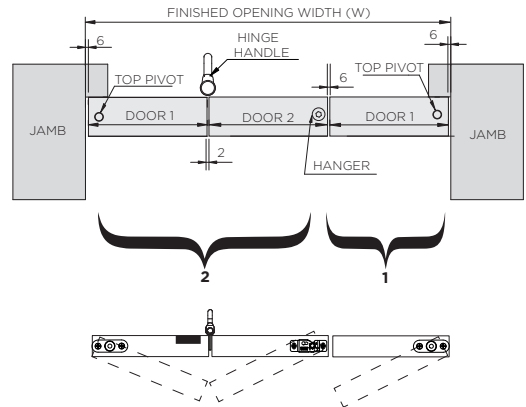
**No Bottom Channel Required**  
allowing for a seamless walkway  
between rooms.

# Door Configurations

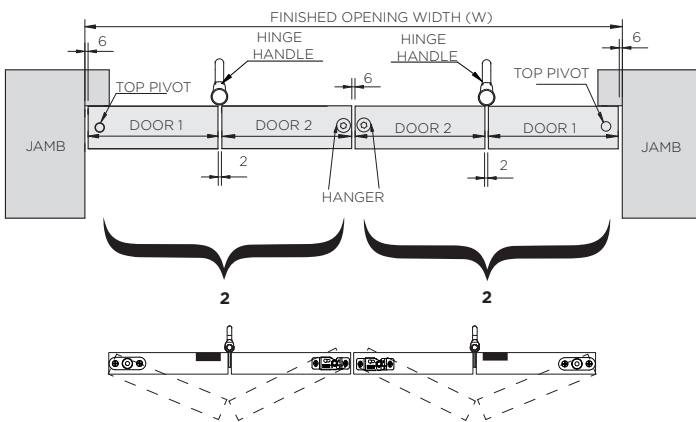
2+0



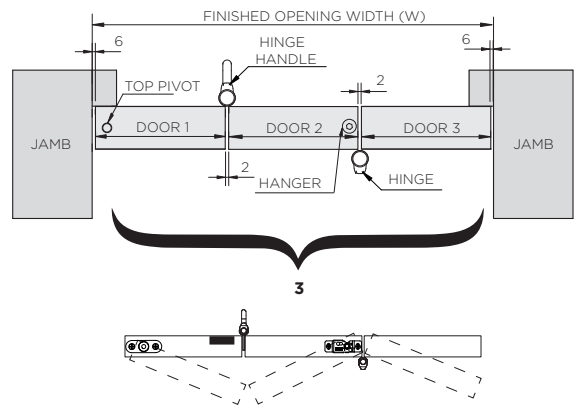
2+1



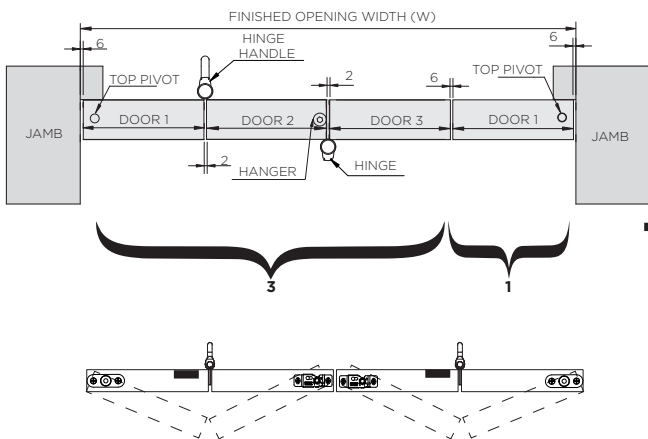
2+2



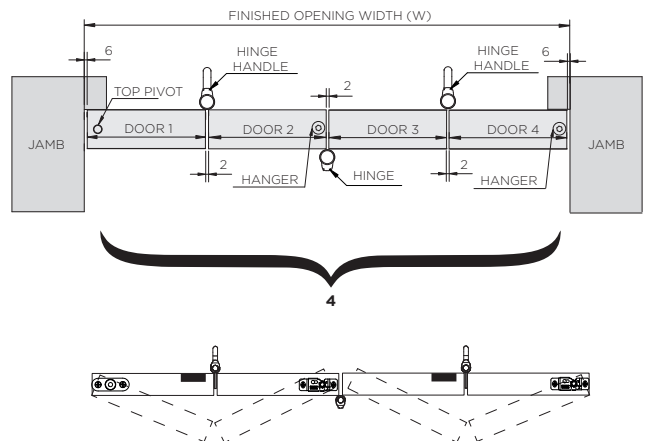
3+0



3+1



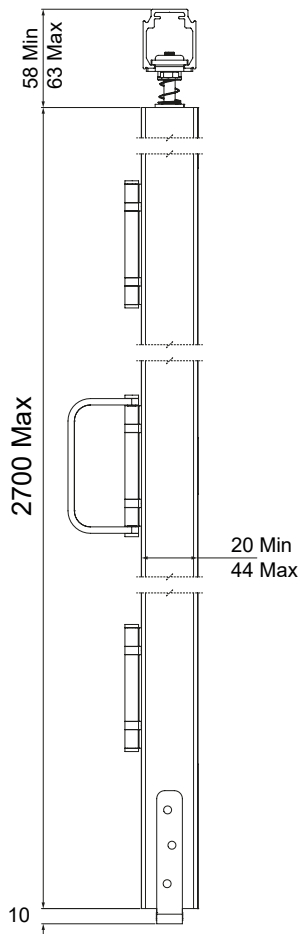
4+0



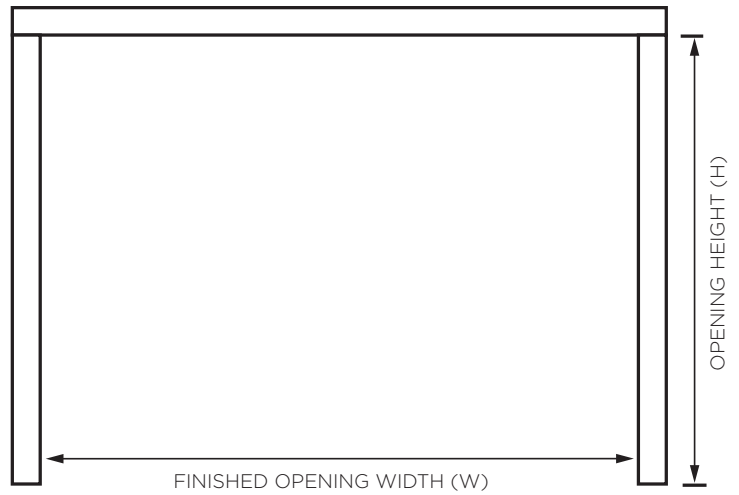
■ = Flush Bolt Location

## Product Diagrams

Section View



Elevation View



### Opening Size Formula

| Door Configuration | Opening Width        | Opening Height |
|--------------------|----------------------|----------------|
| 2+0                | $(DW \times 2) + 14$ | DH + 70        |
| 2+1                | $(DW \times 2) + 20$ |                |
| 2+2                | $(DW \times 2) + 22$ |                |
| 3+0                | $(DW \times 2) + 16$ |                |
| 3+1                | $(DW \times 2) + 22$ |                |
| 4+0                | $(DW \times 2) + 18$ |                |

## Flush Bolt Routing Detail

